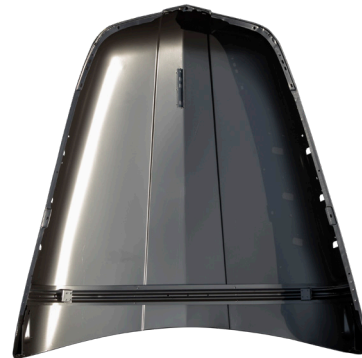
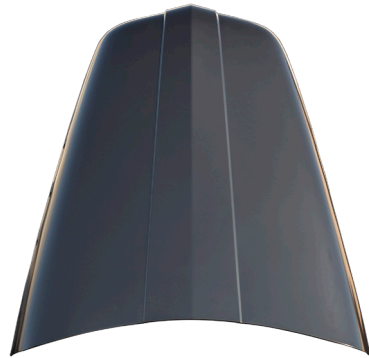


## Hood - OE Style

### 1951 Ford F1, F2



Part #	Description	MSRP
300-4551	* Hood - OE Style - 51 Ford F1 F2	\$999.99

Reproduction OE style hood for the 1951 Ford F1 / F2 model trucks. Stamped from high quality heavy gauge steel, each hood features the correct shape, size, holes, body lines and braces, like original. Hoods arrive EDP coated to help protect against rust and corrosion.

Note: “\*”



This product can expose you to chemicals including but not limited to lead, sulfur, nickel, chromium, vanadium, titanium, polyvinyl chloride and/or 4, 4' -methylenebis (2-chloroaniline) which are known to the state of California to cause cancer or birth defects or other harm. For more information, visit [www.P65Warnings.ca.gov](http://www.P65Warnings.ca.gov)

### CONTACT US



940 Sherwin Pkwy • Buford, Ga • 30518



sales@autometaldirect.com



866.591.8309



www.autometaldirect.com